

## Guidance on cold wave

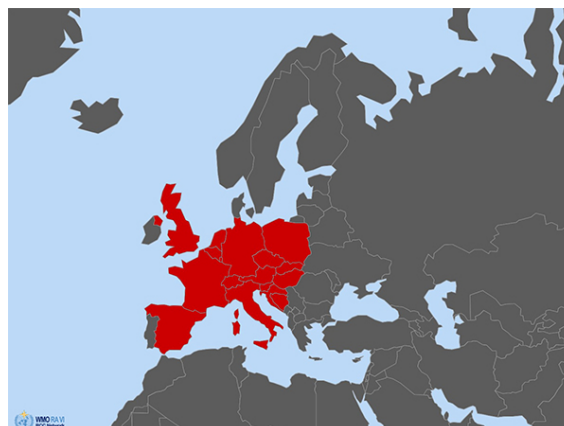
ID: 202006-i

**Area concerned:** United Kingdom, France, Belgium, Luxembourg, Netherlands, Germany, Poland, Czech Republic, Slovakia, Hungary, Croatia, Bosnia-Herzegovina, Slovenia, Austria, Switzerland, Italy, Spain

Initial statement issued on 25 March 2020

Valid: **Begin:** 25 March 2020  
**End:** 8 April 2020

**To:** Climate Watch focal points of NMHS of United Kingdom, France, Belgium, Luxembourg, Netherlands, Germany, Poland, Czech Republic, Slovakia, Hungary, Croatia, Bosnia-Herzegovina, Slovenia, Austria, Switzerland, Italy, Spain



The RA VI RCC Network Offenbach Node on Climate Monitoring (RCC Node-CM) is responsible for providing Climate Watch guidance information for NMHSs' own consideration for issuing climate advisories for their territory.

After having consulted the consortium partners of the RCC Node-CM and RCC Node-LRF (RA VI RCC Network Toulouse and Moscow Node on Long-Range Forecasting), RCC Node-CM issues the following guidance information:

Due to the results from monthly forecasts we expect:

**"Below-normal temperature during the next 2 weeks in Western, Central and Southern Europe with temporary frost periods. Weekly anomalies will be mostly between -1 and -3°C, partly below. The probabilities are above 90 % for the first week and above 80 % for the second week. The cold wave can have significant impact on agriculture. "**

This information should be used as guidance for the National Meteorological and Hydrological Services (NMHS) in a pre-operational mode. It is up to the above-mentioned NMHSs to monitor the status and evolution of the current climate conditions closely and to consider issuing a national Climate Watch Advisory. RCC Node-CM would appreciate feedback from NMHS whether this information was helpful. Also, any suggestion on further pieces of information needed by NMHSs is highly welcomed!

A template for a national climate watch advisory can be provided by DWD on request as agreed among the climate watch pilots and RCC Node-CM.

Please note that further information can be obtained from RCC Node-CM website ([www.dwd.de/rcc-cm](http://www.dwd.de/rcc-cm)) concerning Climate Monitoring and from RCC Node-LRF websites (<http://seasonal.meteo.fr> , <http://neacc.meteoinfo.ru/forecast>) concerning Long-Range Forecast or by e-mail to [rcc.cm@dwd.de](mailto:rcc.cm@dwd.de) or [rcc-lrf-mf@meteo.fr](mailto:rcc-lrf-mf@meteo.fr).

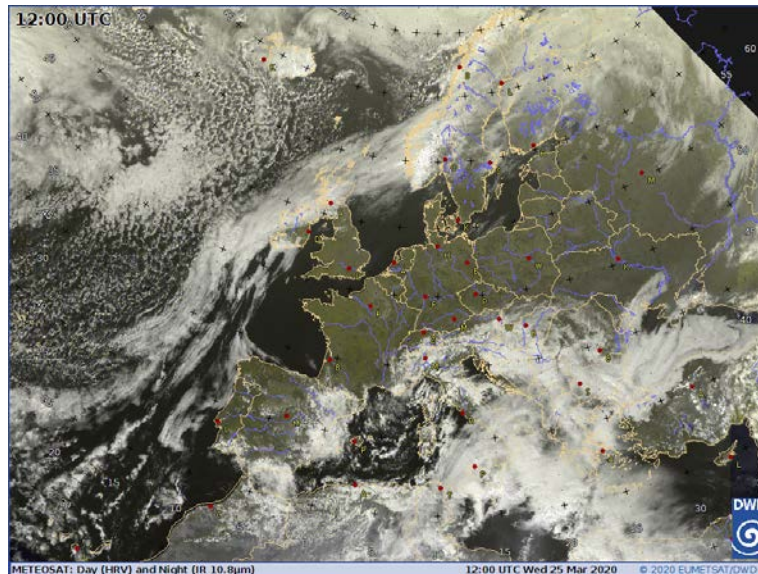
For ECMWF member's further information on monthly forecasts after logging in is provided at <http://www.ecmwf.int/> ->Forecasts

# Climate Watch Advisory

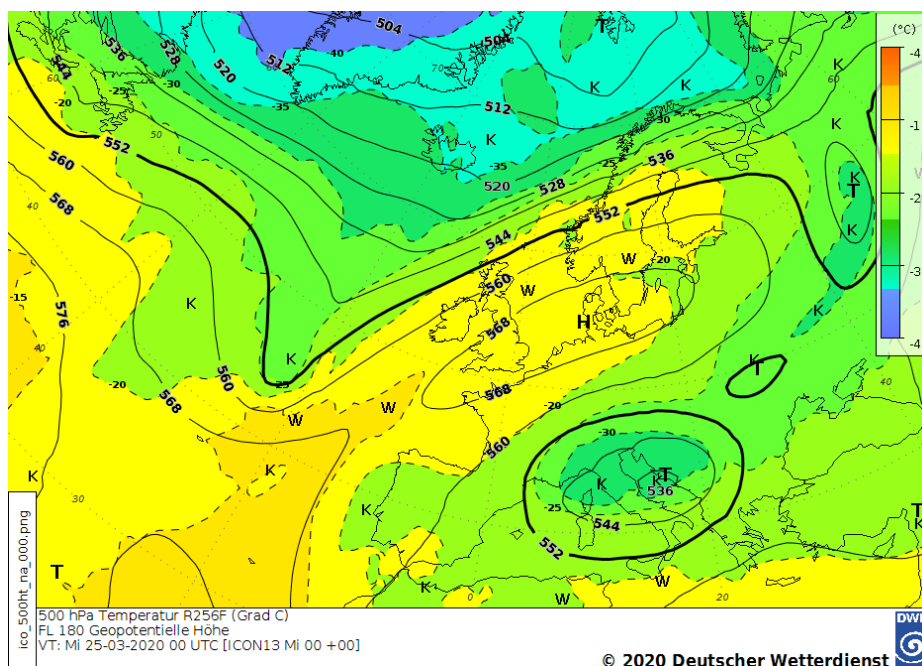
We will monitor the evolution of the anomaly, issue updates if significant change arise and close the advice when no clear signal can be detected in the forecasts.

On behalf of the RCC Node-CM Team

## Supplementary material:



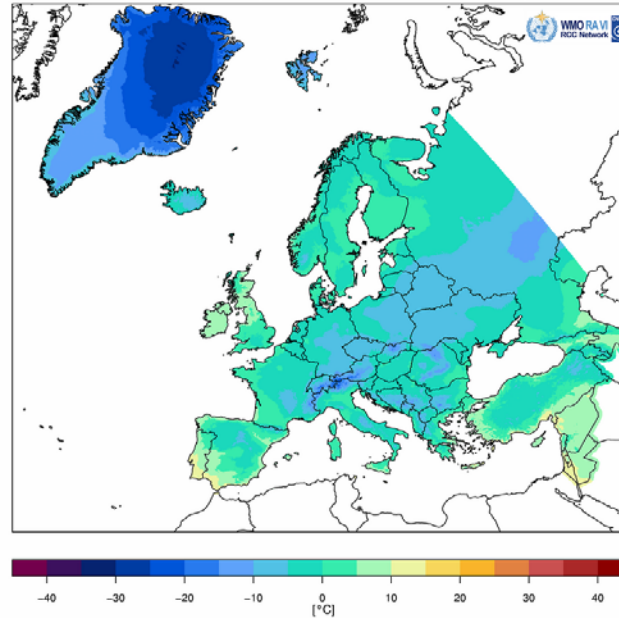
Meteosat satellite image 25 March 2020, 12 UTC. Source: DWD



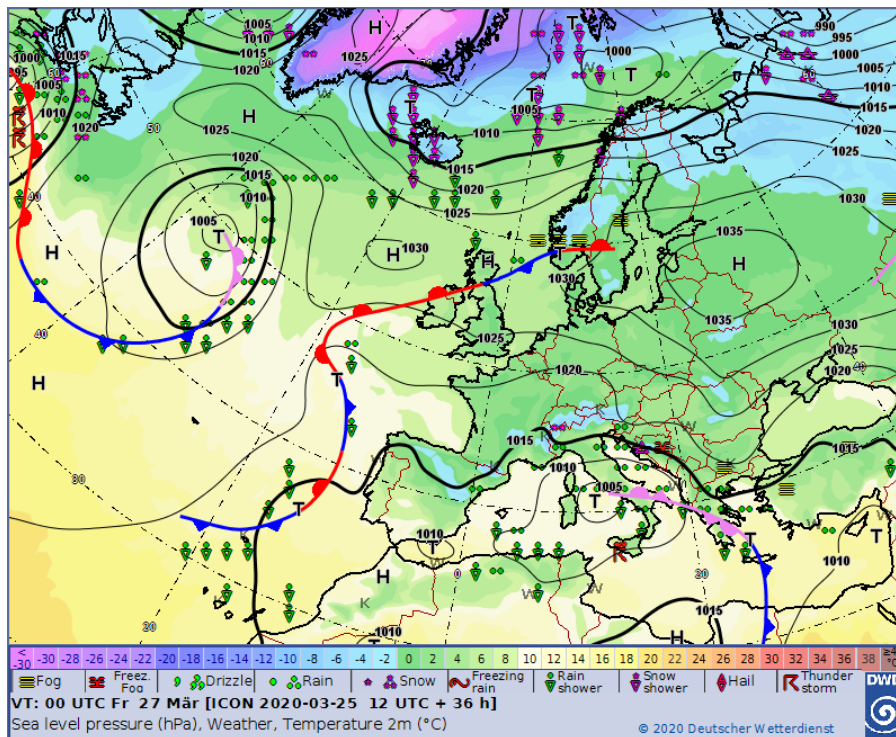
500-hPa chart, 25 March 2020, 00 UTC. Source: DWD

# Climate Watch Advisory

Tägliche Minimumtemperatur: 25. März 2020 (Europa)  
Daily Minimum Temperature: 25 March 2020 (Europe)



Daily minimum temperature on 25 March 2020. Source: DWD,  
[https://www.dwd.de/DE/leistungen/rccm/int/rccm\\_int\\_txtn.html?nn=490674](https://www.dwd.de/DE/leistungen/rccm/int/rccm_int_txtn.html?nn=490674)



Forecast chart for 27 March 2020, 00 UTC, Source: DWD,  
[https://www.dwd.de/EN/ourservices/hobbymet\\_wcharts\\_europe/hobbyeuropecharts.html;jsessionid=18450C0FB47C1FB8EE913A5C65E8F74E.live11053](https://www.dwd.de/EN/ourservices/hobbymet_wcharts_europe/hobbyeuropecharts.html;jsessionid=18450C0FB47C1FB8EE913A5C65E8F74E.live11053)